



11 Turnstone View, Coventry, CV4 8AL Offers Over £350,000

Welcome to the market this modern four-bedroom home located on Turnstone View a sought after development in the Canley area. Designed for contemporary living, this spacious property offers versatile accommodation spread across three well-planned floors, perfect for families or professionals seeking style and comfort with the benefit of NHBC Warranty and no onward chain, ensuring a smooth and swift purchase process.

To the ground floor, step inside the spacious entrance hallway with convenient ground floor w.c. A sleek, well-equipped kitchen with modern fittings and ample storage. Spacious lounge-diner featuring elegant French doors that open onto the rear garden, creating a seamless indoor-outdoor flow. To the first floor, contemporary family bathroom and three well-proportioned bedrooms, ideal for a growing family, up to the second floor where you will find the stunning primary bedroom, featuring two sky lights flooding the space with natural light, a private en-suite shower room and dedicated dressing area.

Externally the property has a small front garden, driveway for two cars and a garage for convenient parking. Private rear garden with a patio area and laid lawn, perfect for relaxing and a great space for the kids to play. There is a children's play area directly opposite and Cannon Park Shopping Centre and Warwick University is a short distance away.

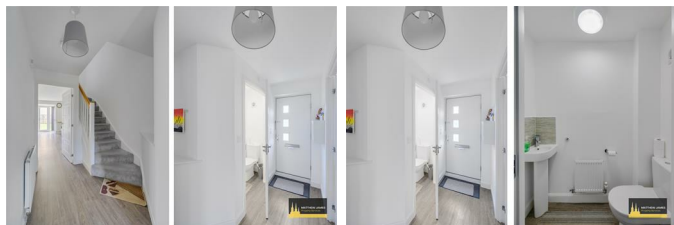
This home combines modern design with practical living, all within easy reach of local amenities, transport links, and green spaces. Don't miss the opportunity to make this exceptional property your own.

Approach



Ground Floor:

Entrance Hallway



Kitchen

13'9 x 8'1 (4.19m x 2.46m)



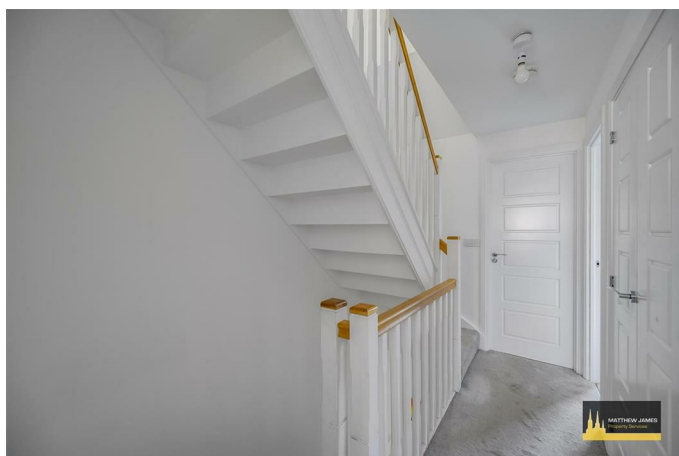
Lounge / Diner

17'01 x 15'0 (5.21m x 4.57m)



First Floor:

First Floor Landing



Bathroom

6'11 x 6'3 (2.11m x 1.91m)



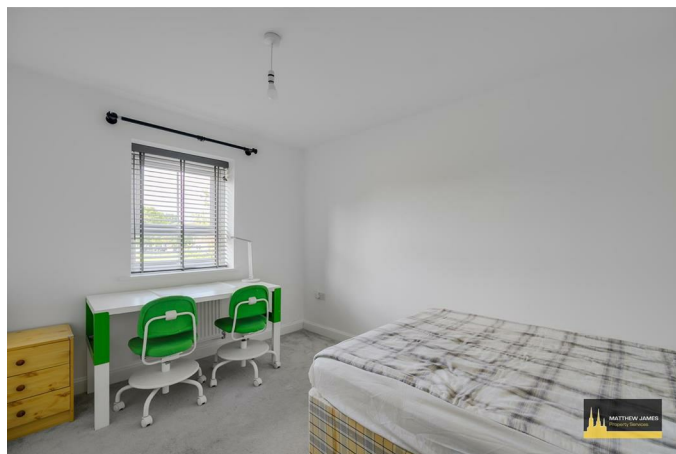
Bedroom Three

12'1 x 8'5 (3.68m x 2.57m)



Bedroom Two

14'56 x 8'6 (4.27m x 2.59m)



Bedroom Four
9'0 x 6'2 (2.74m x 1.88m)



Tandem Driveway



Second Floor:

Bedroom One
18'3 x 11'6 (5.56m x 3.51m)



Garage

Rear Garden



En-Suite Shower Room
8'0 x 6'3 (2.44m x 1.91m)



Surrounding Facilities

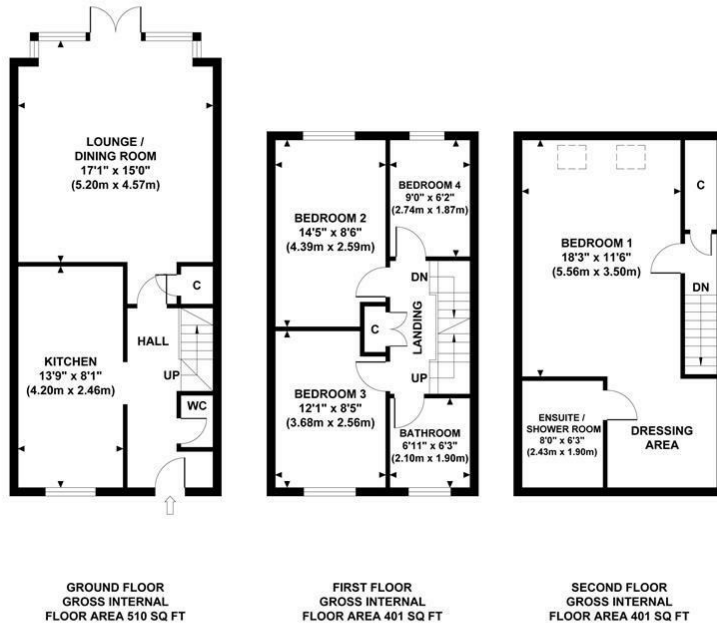


Dressing Area

Floor Plan

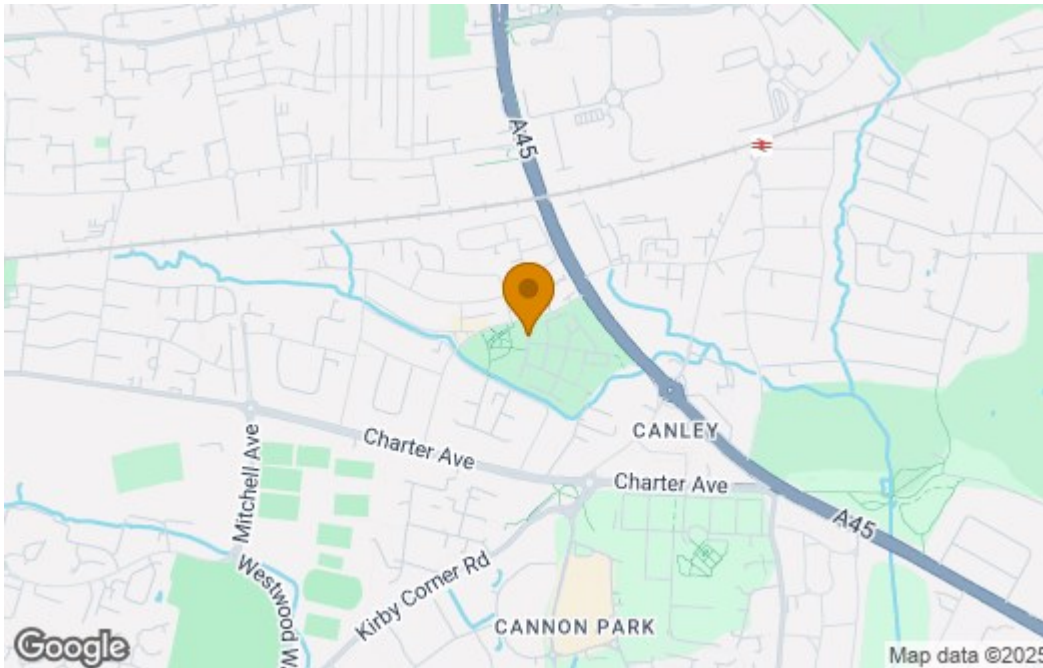
11 TURNSTONE VIEW

Approximate Gross Internal Area
1312 sq ft / 121.88 sq m

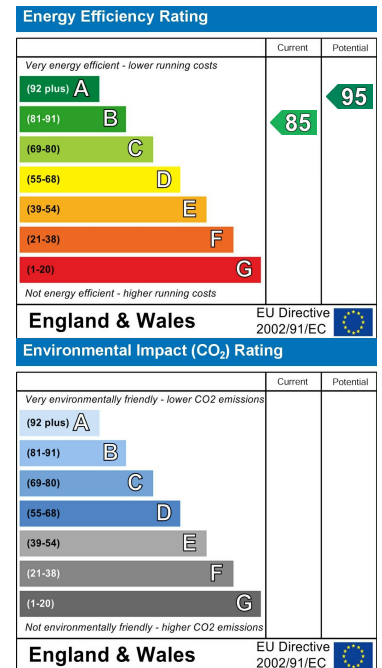


Although every attempt has been made to ensure accuracy, all measurements are approximate and no responsibility is taken for any error, omission, or mis-statement. This floor plan is for illustrative purposes only and not to scale. Measured in accordance to RICS standards.

Area Map



Energy Efficiency Graph



These particulars, whilst believed to be accurate are set out as a general outline only for guidance and do not constitute any part of an offer or contract. Intending purchasers should not rely on them as statements of representation of fact, but must satisfy themselves by inspection or otherwise as to their accuracy. No person in this firm's employment has the authority to make or give any representation or warranty in respect of the property.

CONTACT INFORMATION

24a Warwick Row, Coventry CV1 1EY

02477 170170

info@matthewjames.uk.com

www.matthewjames.uk.com

Facebook

Twitter